



40W AC LED Street Light



Product Feature

- AC Integrated Driver, High Reliability, PF>0.98
- With OVP, OTP and OCP Protection
- 10KV Surge Protection(External SPD)
- LED SMD3030, CRI>80
- Can pass CE, RoHS, FCC,SAA,RCM Certification
- CCT:3000K,4000K,6000K Options
- Long life:30,000 hrs,3 years warranty
- Butterfly Beam Angle (with lens)
- High efficiency, High Lumen LUX
- No UV or Infrared Radiation

Description

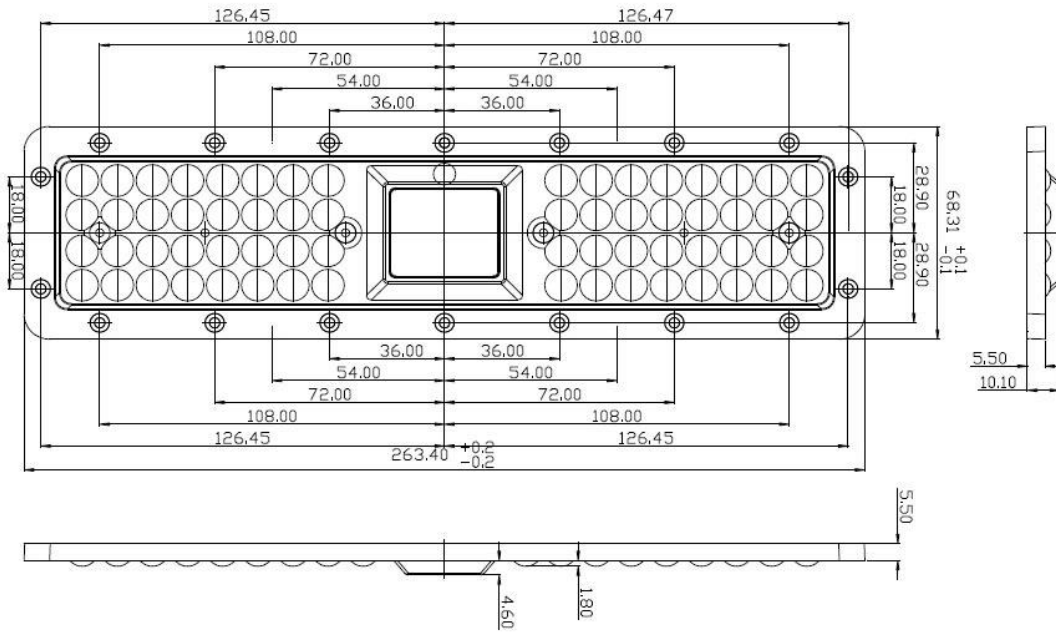
Light Source:	BRIDGELUX SMD 3030 64pcs		
Rated Power(W):	40W±5% @230VAC		
Input Voltage(V):	200-265VAC		
Power Factor:	0.98		
Driver:	AC linear		
Surge Protection:	10KV Surge Protection(External SPD)		
Luminous Flux(lm):	105lm/W±5%		
CCT(K):	WW 3000K	NW 4000K	CW 6000K
CRI:	>80		
Beam Angle:	Butterfly Wide Angle		
Material:	Aluminum +PC Diffusion Cover		
Lifespan(H)	>30,000		
Operation Temp.	-33°C-55°C		
Weight	0.8kg		
Dimension(mm):	271*254*75mm		

Product Application

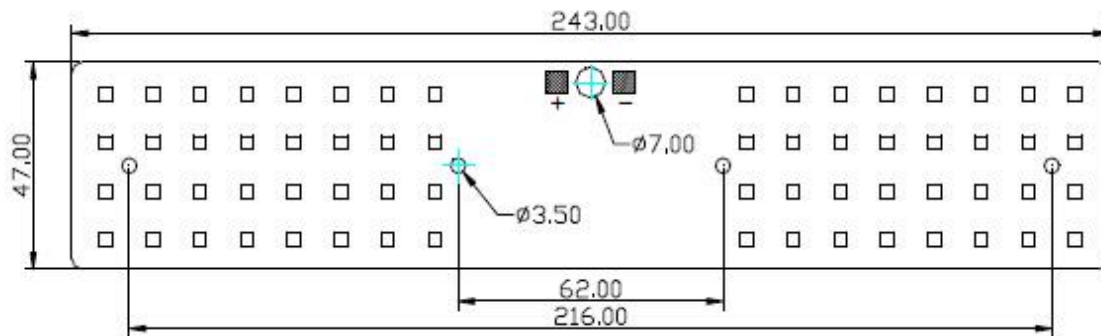
Street Light, Road way, Residential areas, Industrial park etc.



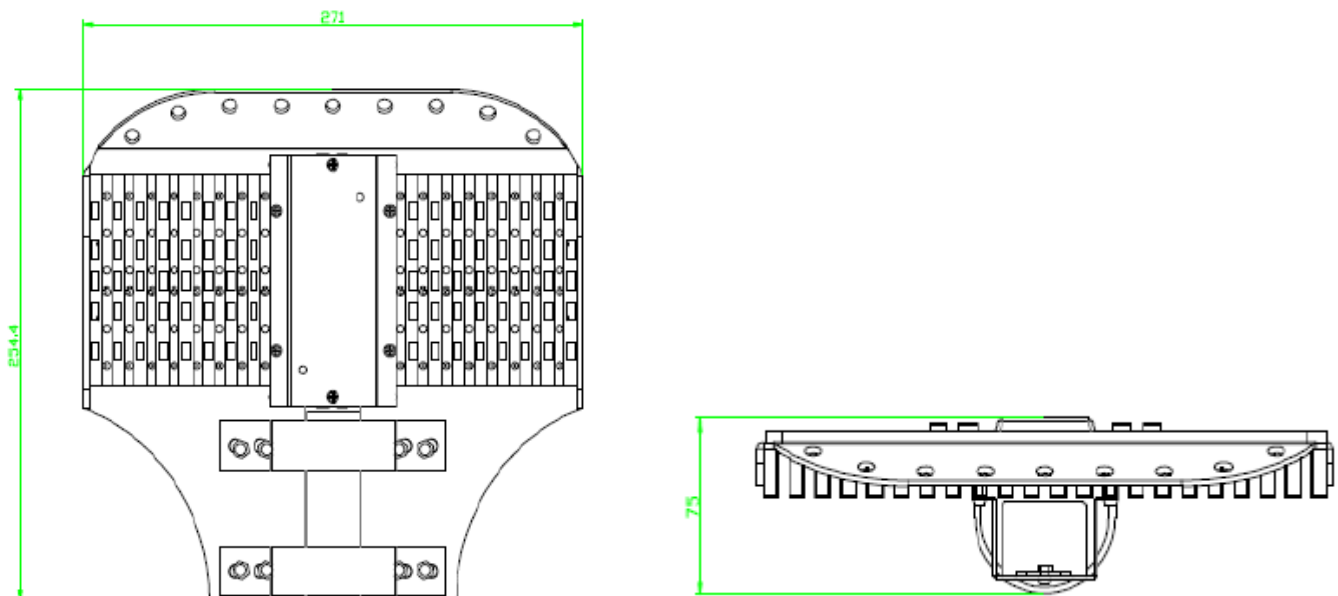
Lens Dimension



PCB Dimension



Heat Sink Dimension



PCB Light Board



60 Degree Lens Cover



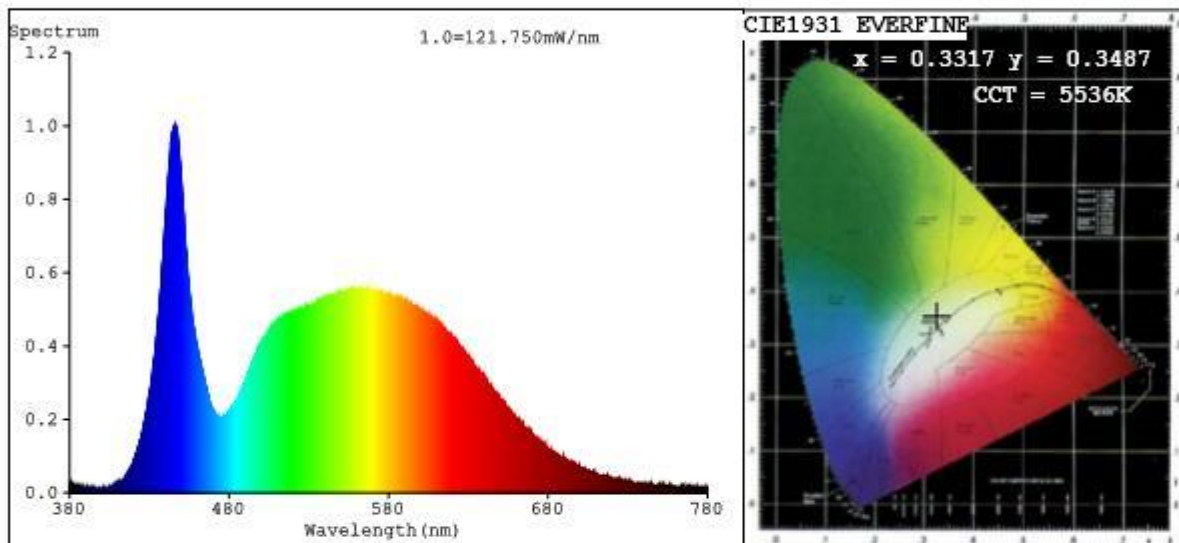
Aluminum Heat Sink



40W AC2200 BRIDGELUX chips Spectrum Test :



Spectrum Test Report



Color Parameters:

Chromaticity Coordinate:x=0.3317 y=0.3487/u'=0.2034 v'=0.4813

CCT=5536K(Duv=0.0042) Dominant WL:Ld =548.8nm Purity=4.2%

Ratio:R=14.6% G=80.8% B=4.6% Peak WL:Lp=445.9nm FWHM=20.1nm

Render Index:Ra=82.3

R1 =81 R2 =85 R3 =89 R4 =84 R5 =82 R6 =81 R7 =87

R8 =71 R9 =11 R10=65 R11=84 R12=66 R13=81 R14=94 R15=75

Photo Parameters:

Flux = 4307 lm Eff. : 104.62 lm/W Fe = 13.72 W

Electrical parameters:

V = 220.44 V I = 0.1893 A P = 41.17 W PF = 0.9868

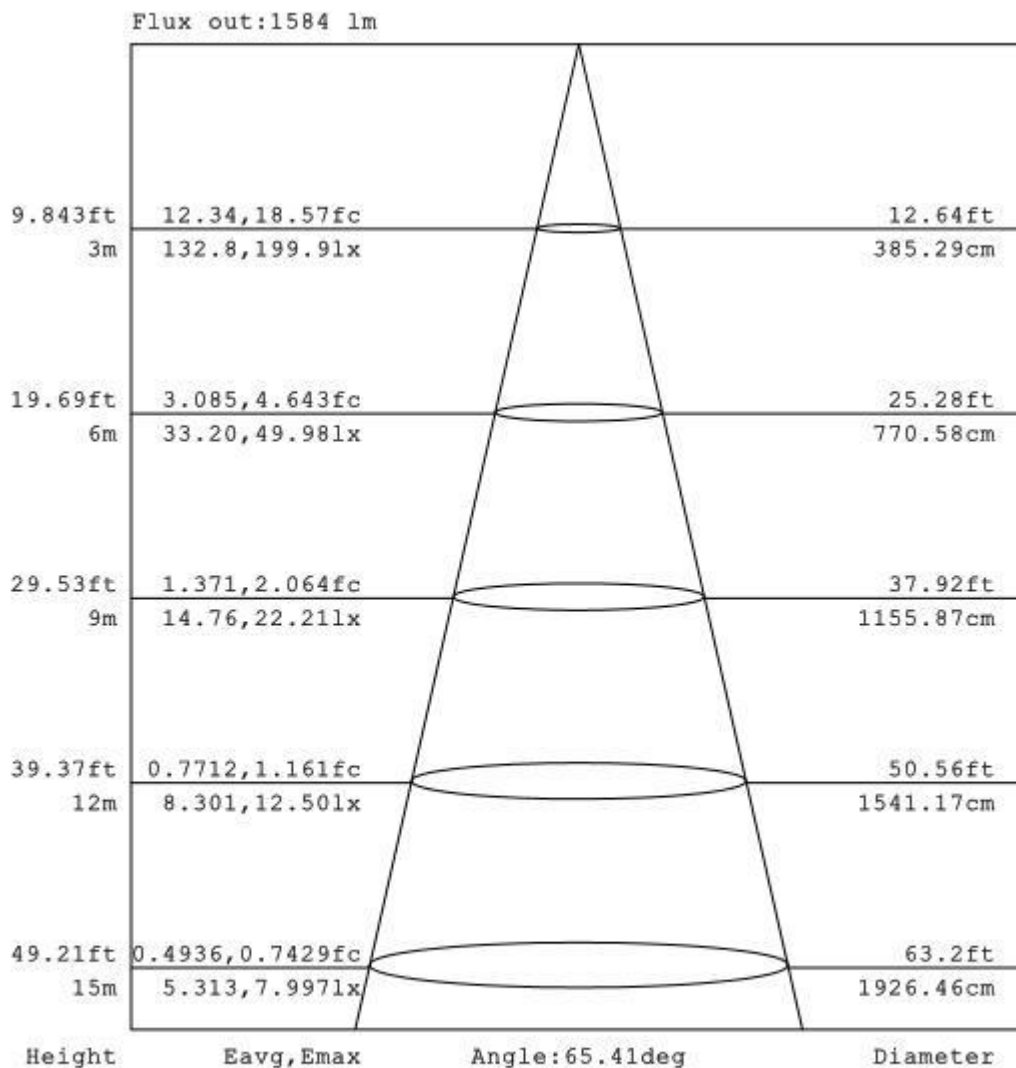
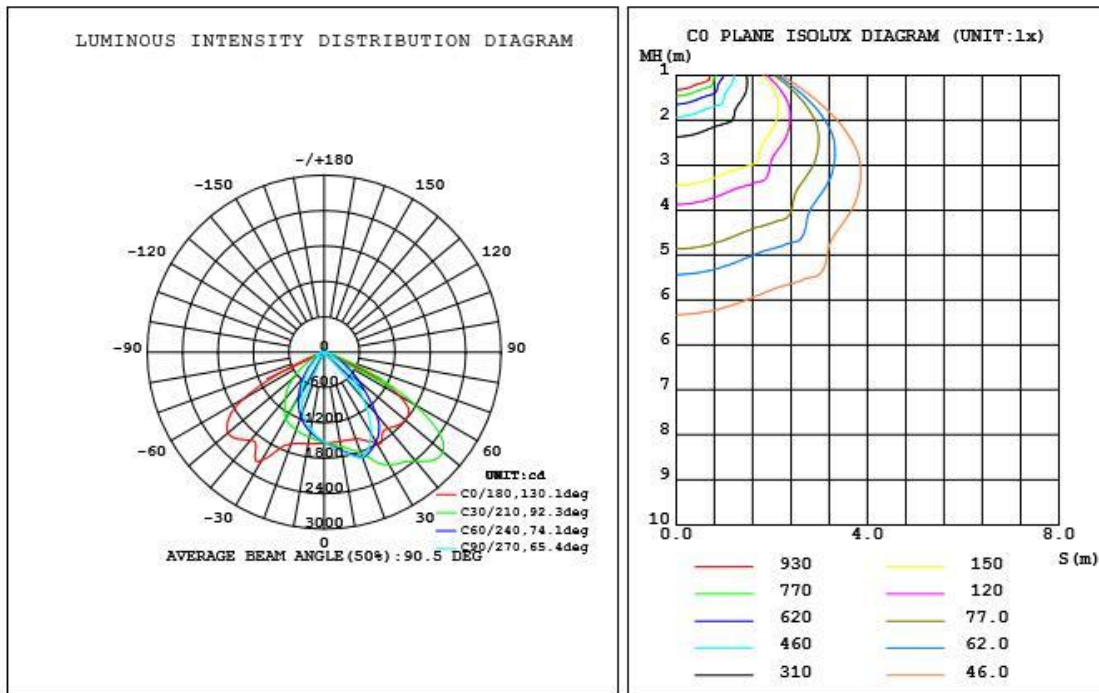
WHITE:ANSI_5700K

Status: Integral T = 10 ms Ip = 3221 (5%)

Model:
Tester:
Temperature:25.3Deg
Manufacturer:SANTREE

Number:4
Date:2016-10-14
Humidity:65.0%
Remarks:1

40W AC2200 70* Wide beam angle distribution test :



Note: The Curves indicate the illuminated area and the average illumination when the luminaire is at different distance.